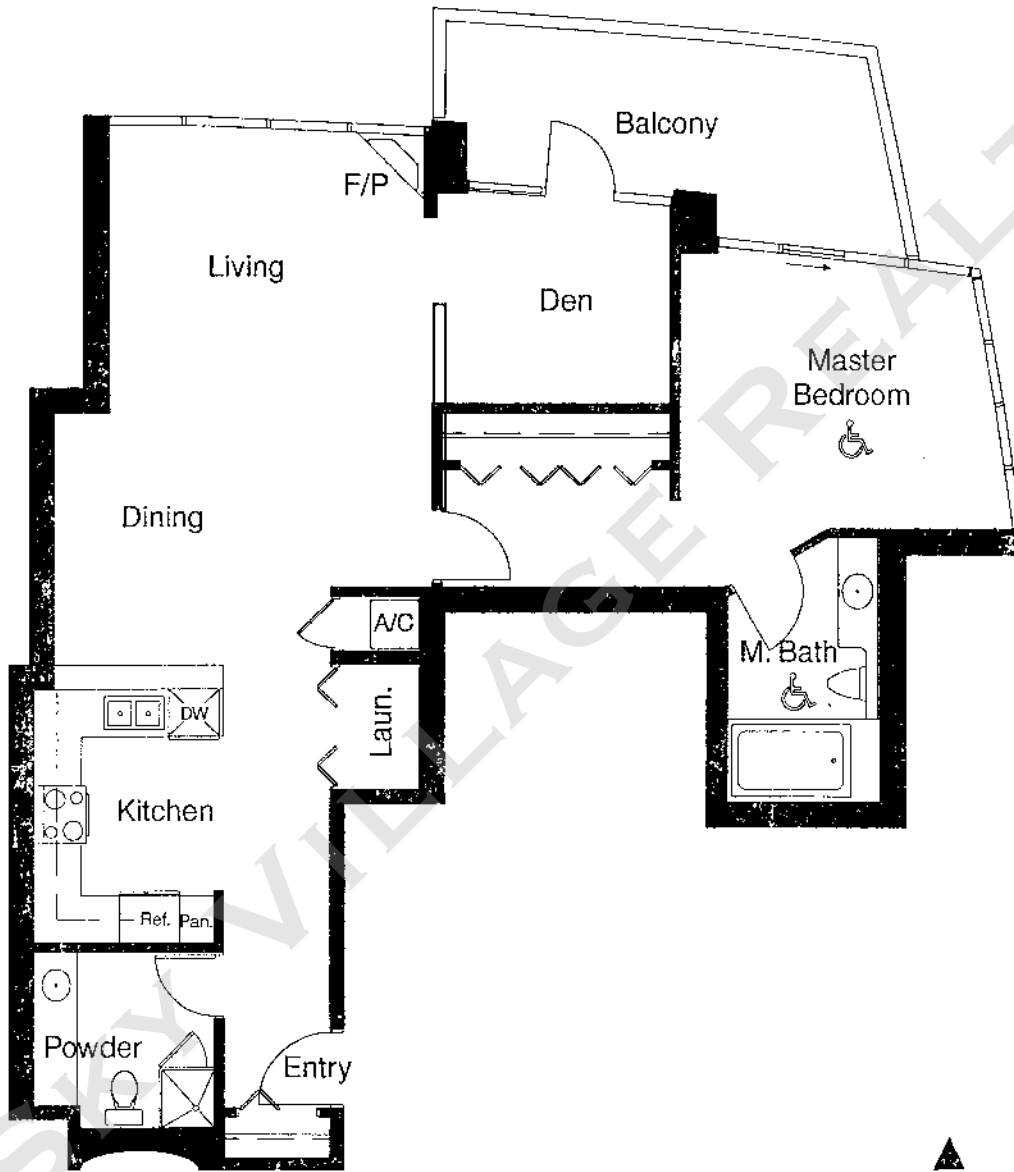


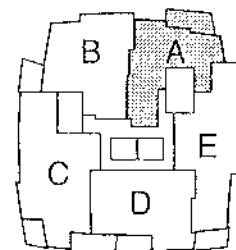
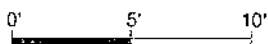


HORIZONS

MARINA DISTRICT



Plan A
 1 Bedroom & Den
 1,036 sq.ft. (approximate)



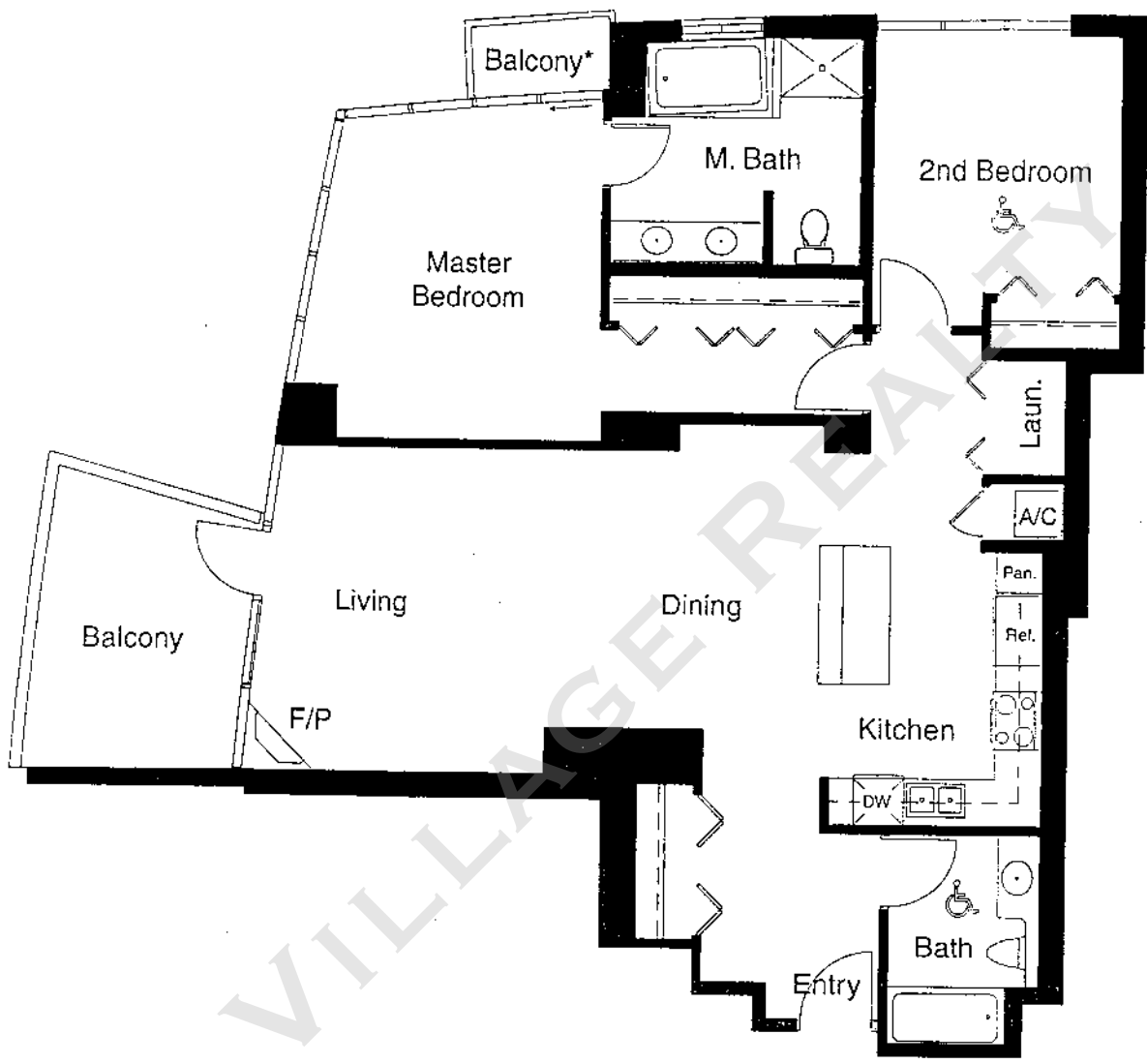
#301 to #1701

The builder reserves the right to change floor plans, elevations, specifications and prices without notice. Square footages as noted are approximations of each individual unit. The Purchaser is responsible for verification of the unit layout & square footage. All renderings, floor plans and maps are artist's conceptions and are not intended to be an actual depiction of buildings, driveways or landscaping. Floor plans vary. Ask a Horizons sales person for details.



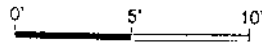
HORIZONS

MARINA DISTRICT

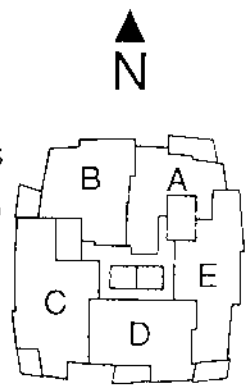


SKY VILLAGE REALTY

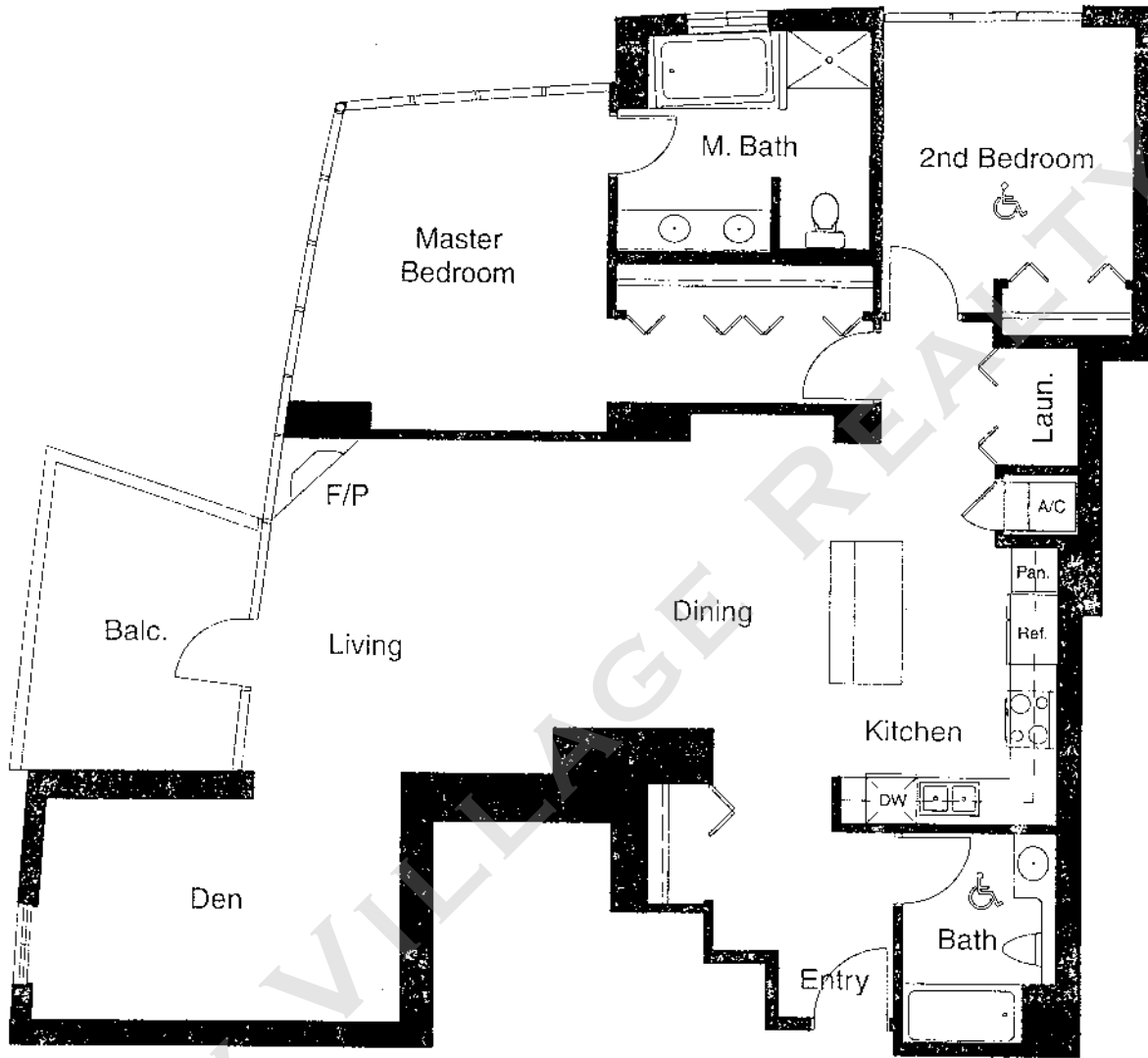
Plan B
 2 Bedroom
 1,245 sq.ft. (approximate)



#305 to #1705
 *Balcony off
 Master Bedroom on
 Levels 3 to 15 only.

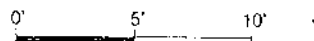


The builder reserves the right to change floor plans, elevations, specifications and prices without notice. Square footages as noted are approximations of each individual unit. The Purchaser is responsible for verification of the unit layout & square footage. All renderings, floor plans and maps are artist's conceptions and are not intended to be

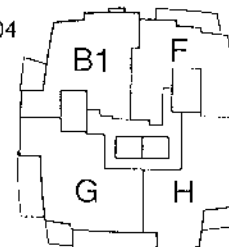


SKY VILLAGE REALTY

Plan B1
 2 Bedroom & Den
 1,393 sq.ft. (approximate)



#1804 to #1904

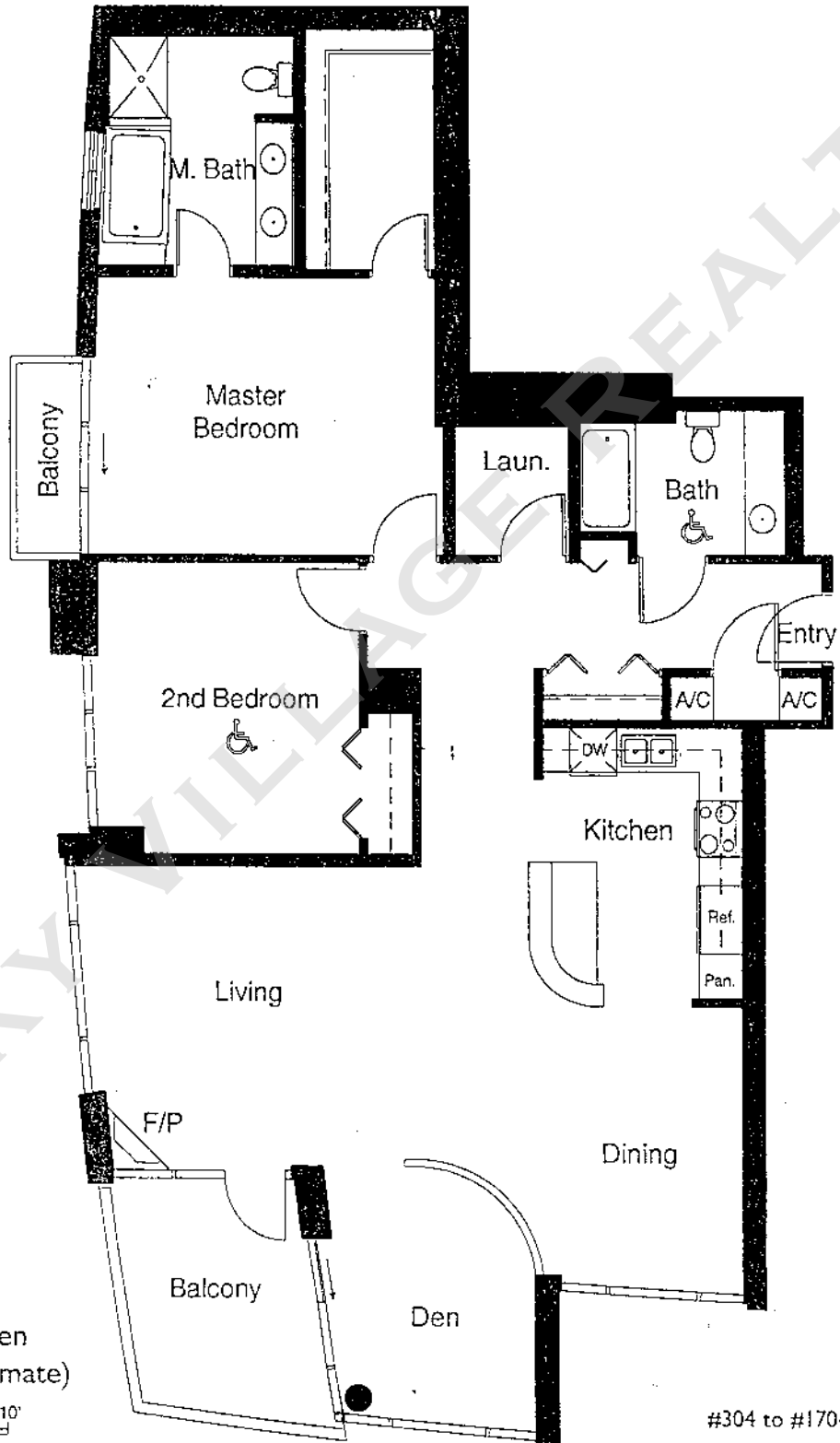


The builder reserves the right to change floor plans, elevations, specifications and prices without notice. Square footages as noted are approximations of each individual unit. The Purchaser is responsible for verification of the unit layout & square footage. All renderings, floor plans and maps are artist's conceptions and are not intended to be an actual depiction of buildings, driveways or landscaping. Floor plans vary. Ask a Horizons sales person for details.

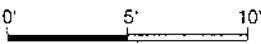


HORIZONS

MARINA DISTRICT



Plan C
2 Bedroom & Den
1,544 sq.ft. (approximate)



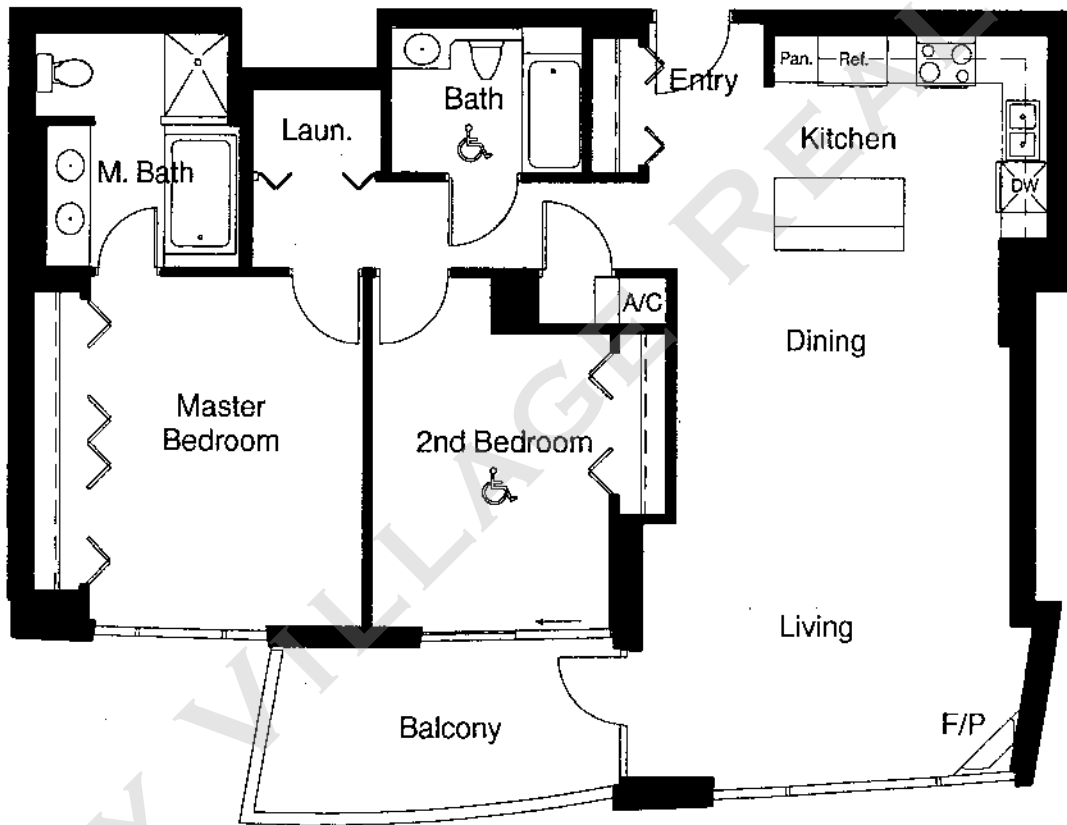
#304 to #1704

The builder reserves the right to change floor plans, elevations, specifications and prices without notice. Square footages as noted are approximations of each individual unit. The Purchaser is responsible for verification of the unit layout & square footage. All renderings, floor plans, and maps are artist's conceptions and are not intended to be

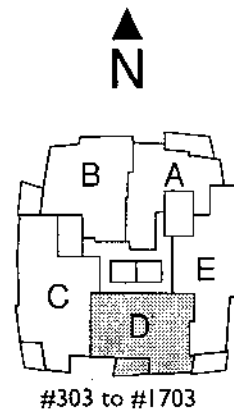
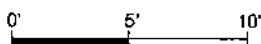


HORIZONS

MARINA DISTRICT



Plan D
 2 Bedroom
 1,215 sq.ft. (approximate)



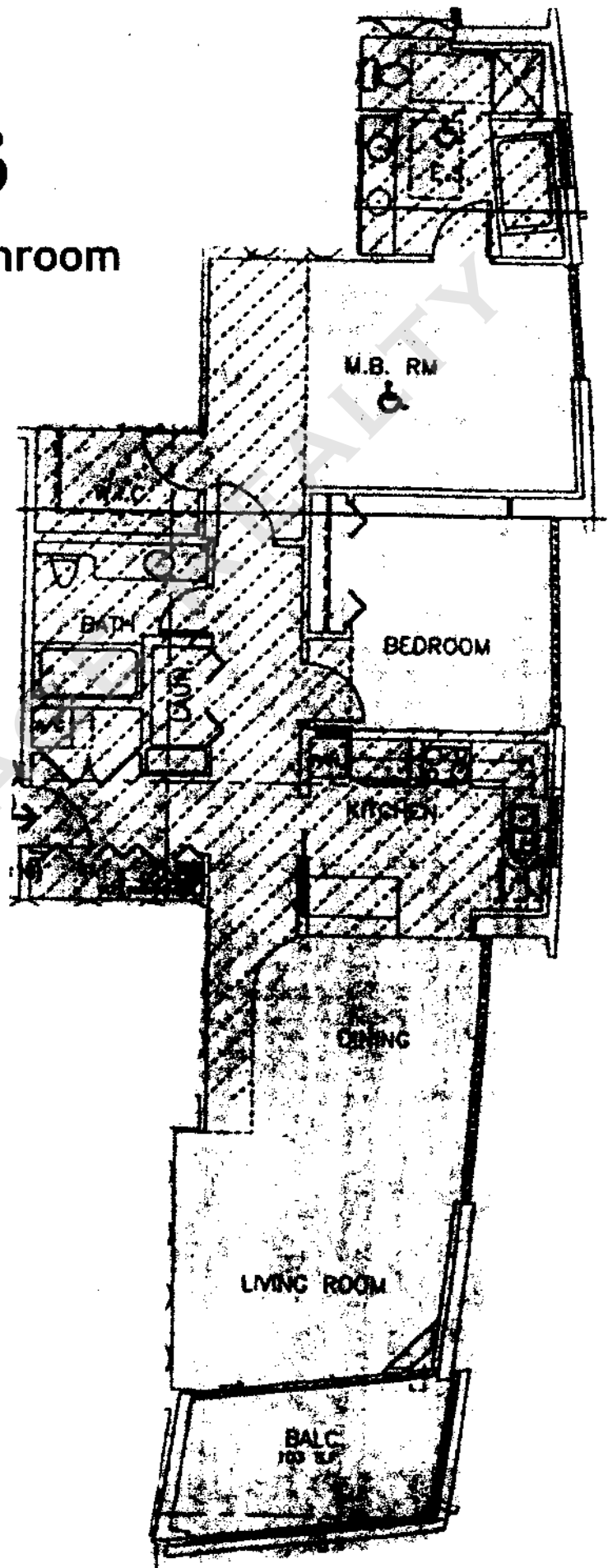
The builder reserves the right to change floor plans, elevations, specifications and prices without notice. Square footages as noted are approximations of each individual unit. The Purchaser is responsible for verification of the unit layout & square footage. All renderings, floor plans and maps are artist's conceptions and are not intended to be an actual depiction of buildings, driveways or landscaping. Floor plans vary. Ask a Horizons sales person for details.

Horizons

Plan E - 2 Bedroom, 2 Bathroom

Orientation: Southeast

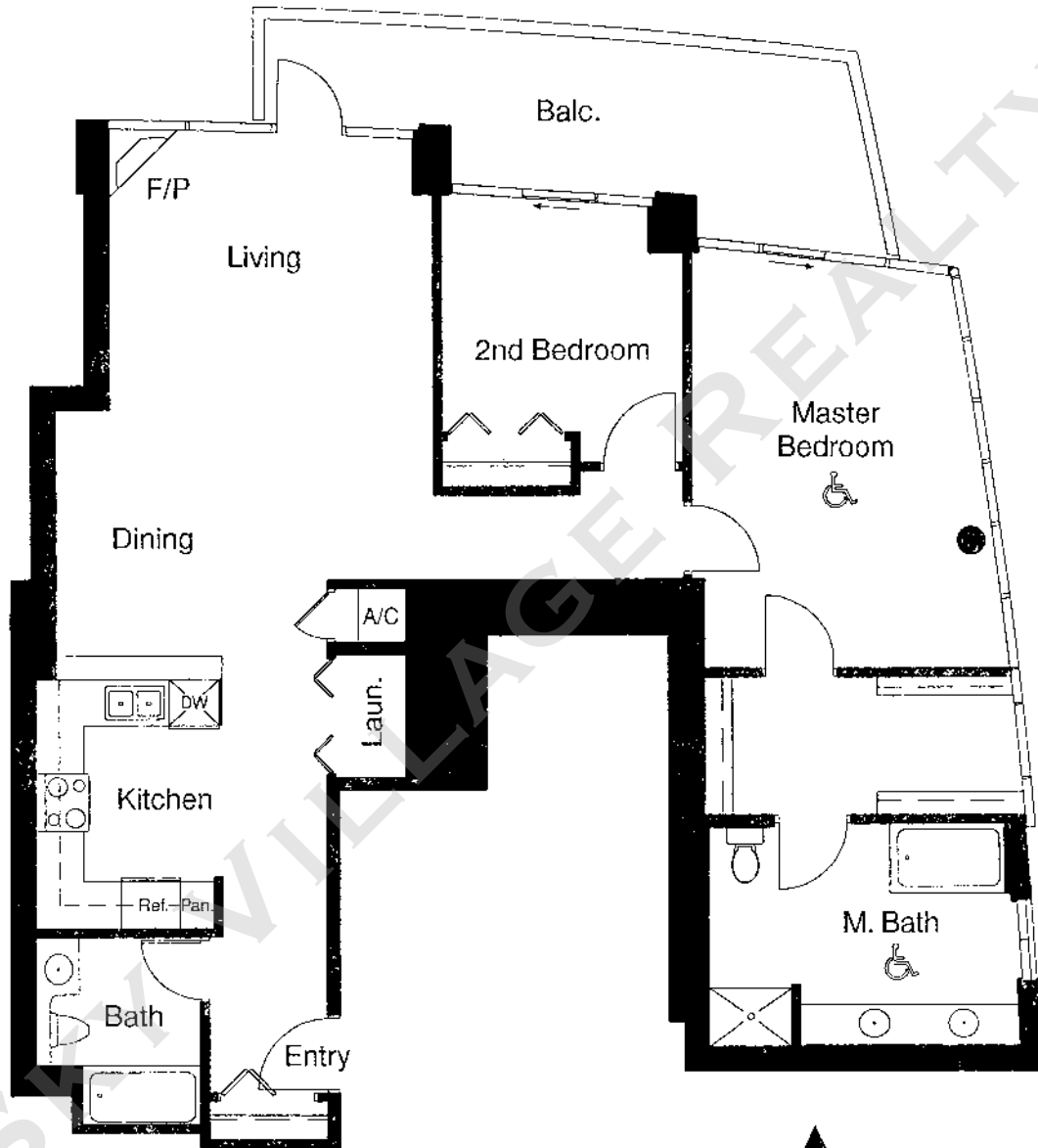
1,301 esf



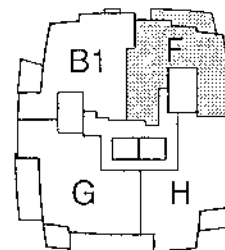
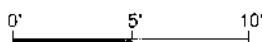


HORIZONS

MARINA DISTRICT

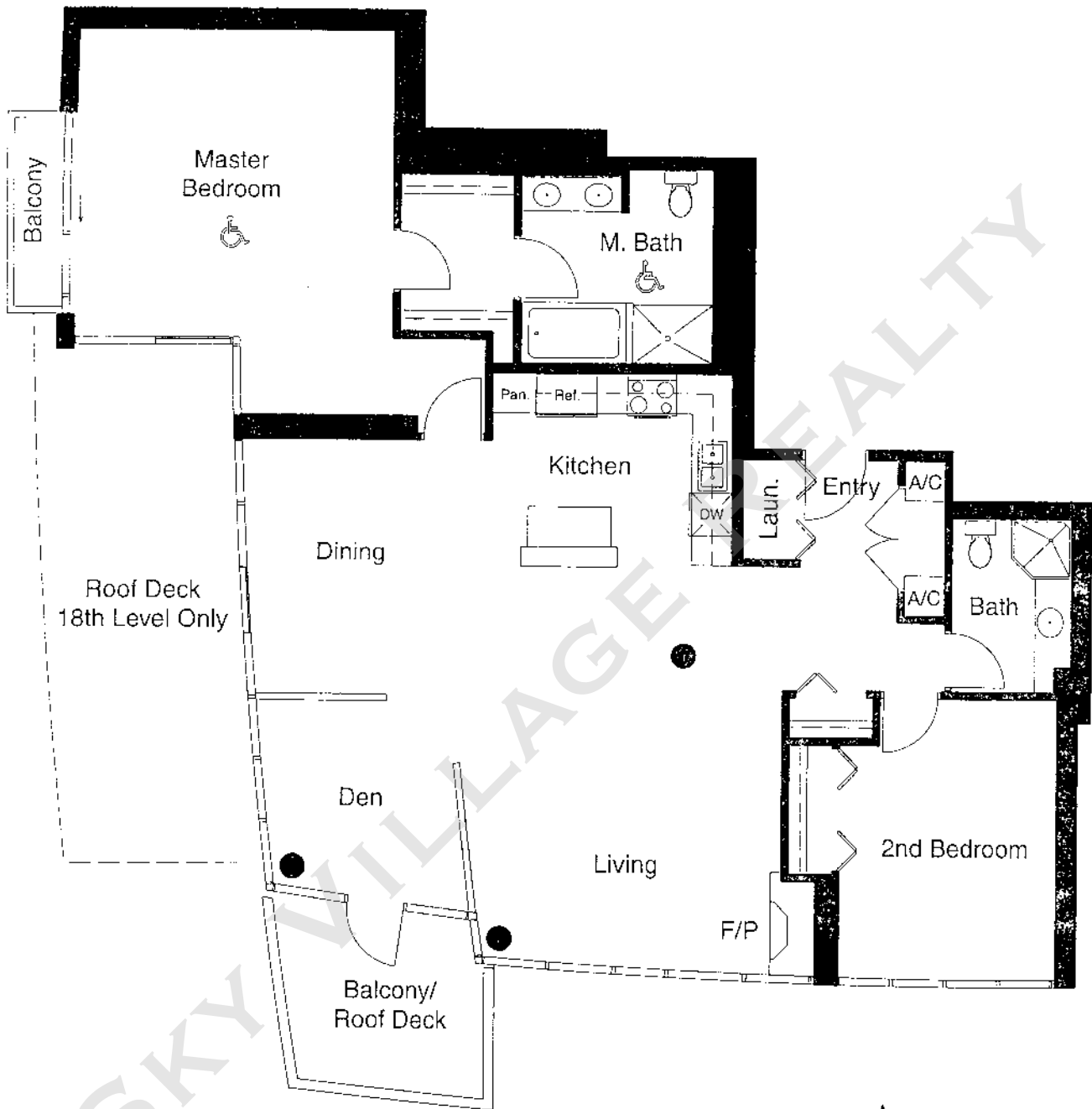


Plan F
 2 Bedroom
 1,263 sq.ft. (approximate)

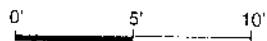


#1801 to #2301

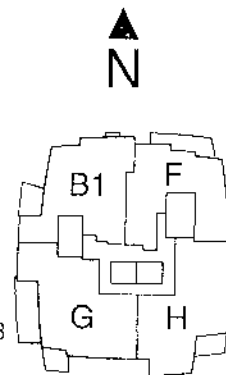
The builder reserves the right to change floor plans, elevations, specifications and prices without notice. Square footages as noted are approximations of each individual unit. The Purchaser is responsible for verification of the unit layout & square footage. All renderings, floor plans and maps are artist's conceptions and are not intended to be an actual depiction of buildings, driveways or landscaping. Floor plans vary. Ask a Horizons sales person for details.



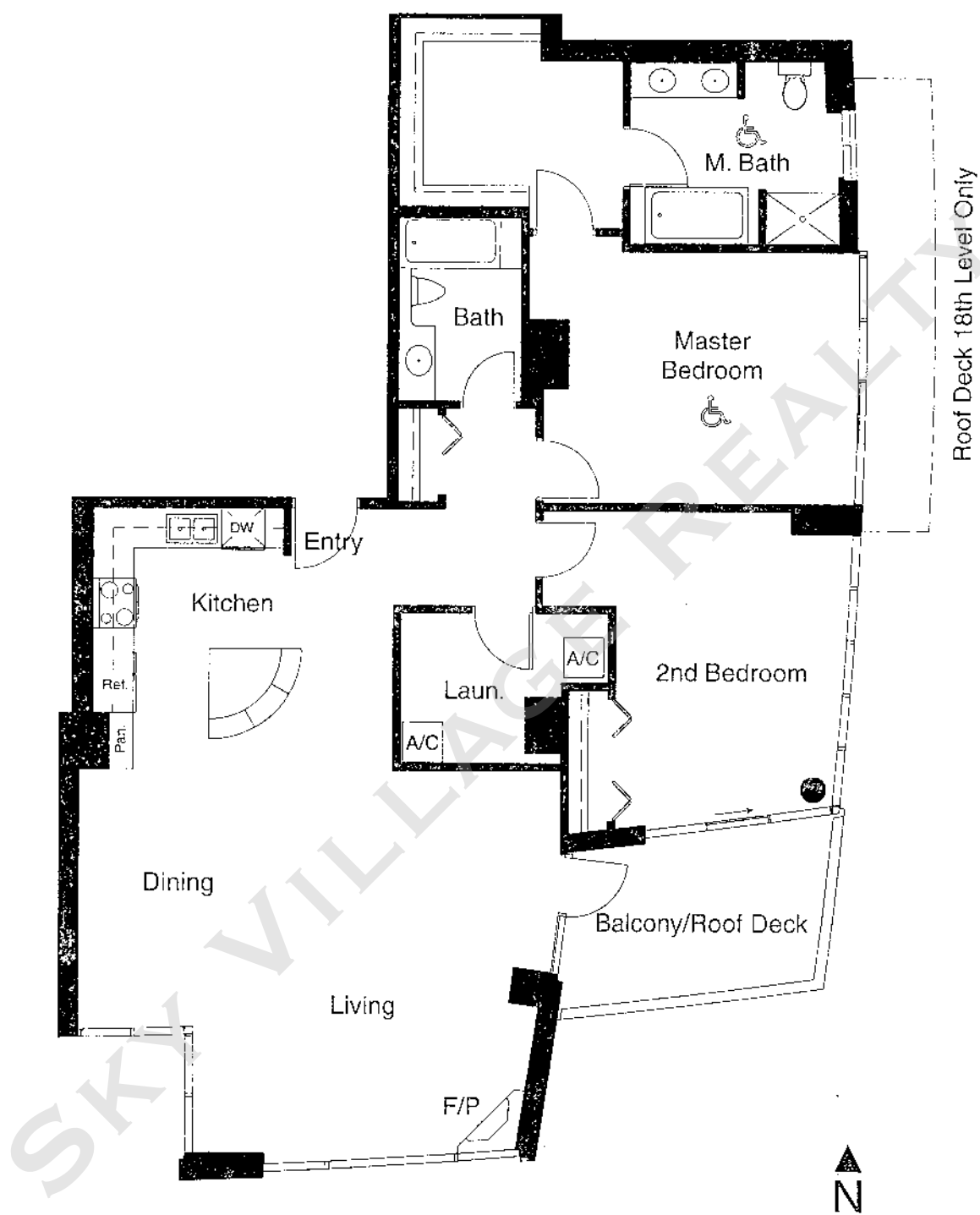
Plan G
 2 Bedroom & Den
 1,530 sq.ft. (approximate)



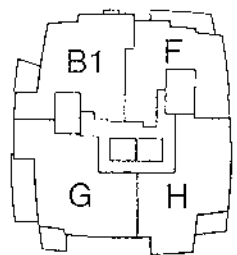
#1803 to #1903



The builder reserves the right to change floor plans, elevations, specifications and prices without notice. Square footages as noted are approximations of each individual unit. The Purchaser is responsible for verification of the unit layout & square footage. All renderings, floor plans and maps are artist's conceptions and are not intended to be an actual depiction of buildings, driveways or landscaping. Floor plans vary. Ask a Horizons sales person for details.



Plan H
 2 Bedroom
 1,497 sq.ft. (approximate)

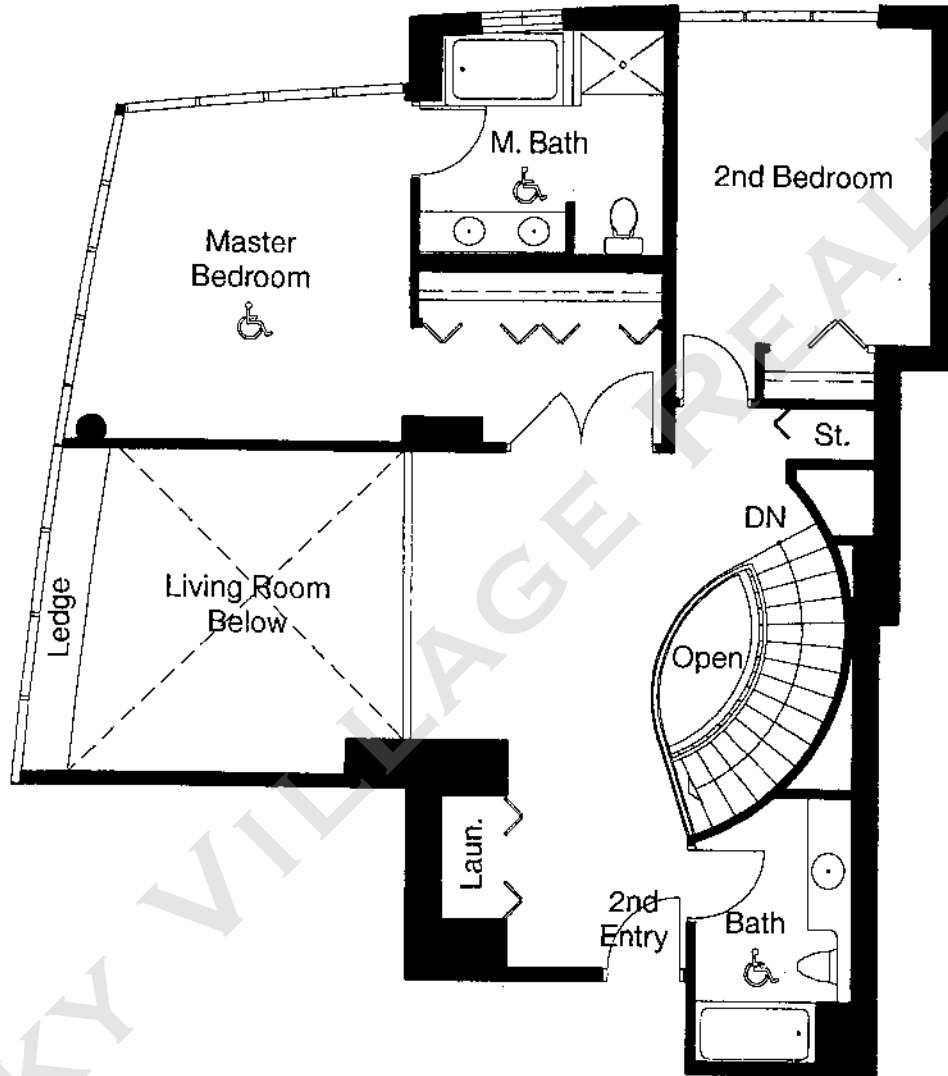


#1802 to #1902

The builder reserves the right to change floor plans, elevations, specifications and prices without notice. Square footages as noted are approximations of each individual unit. The Purchaser is responsible for verification of the unit layout & square footage. All renderings, floor plans and maps are artist's conceptions and are not intended to be an actual depiction of buildings, driveways or landscaping. Floor plans vary. Ask a Horizons sales person for details.



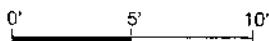
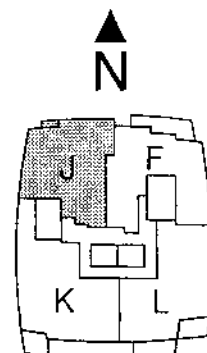
HORIZONS
MARINA DISTRICT



Second Level

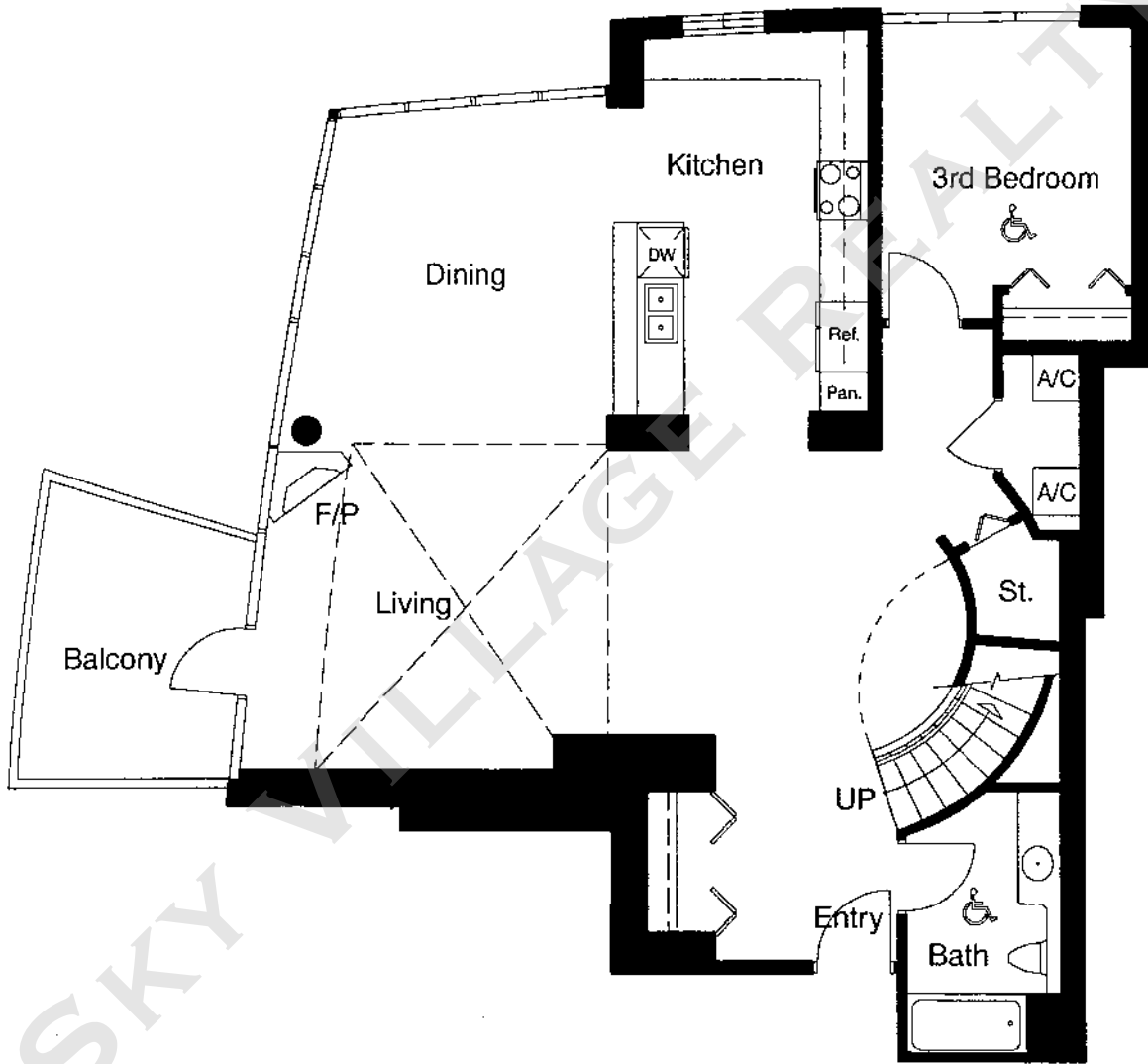
Plan J - Two Level
3 Bedroom
2,267 sq.ft. (approximate)

#2004 to #2204





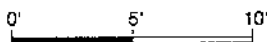
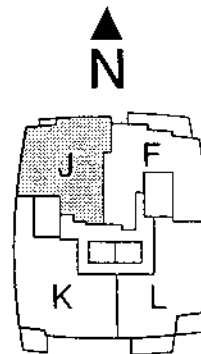
HORIZONS
MARINA DISTRICT



Main Level

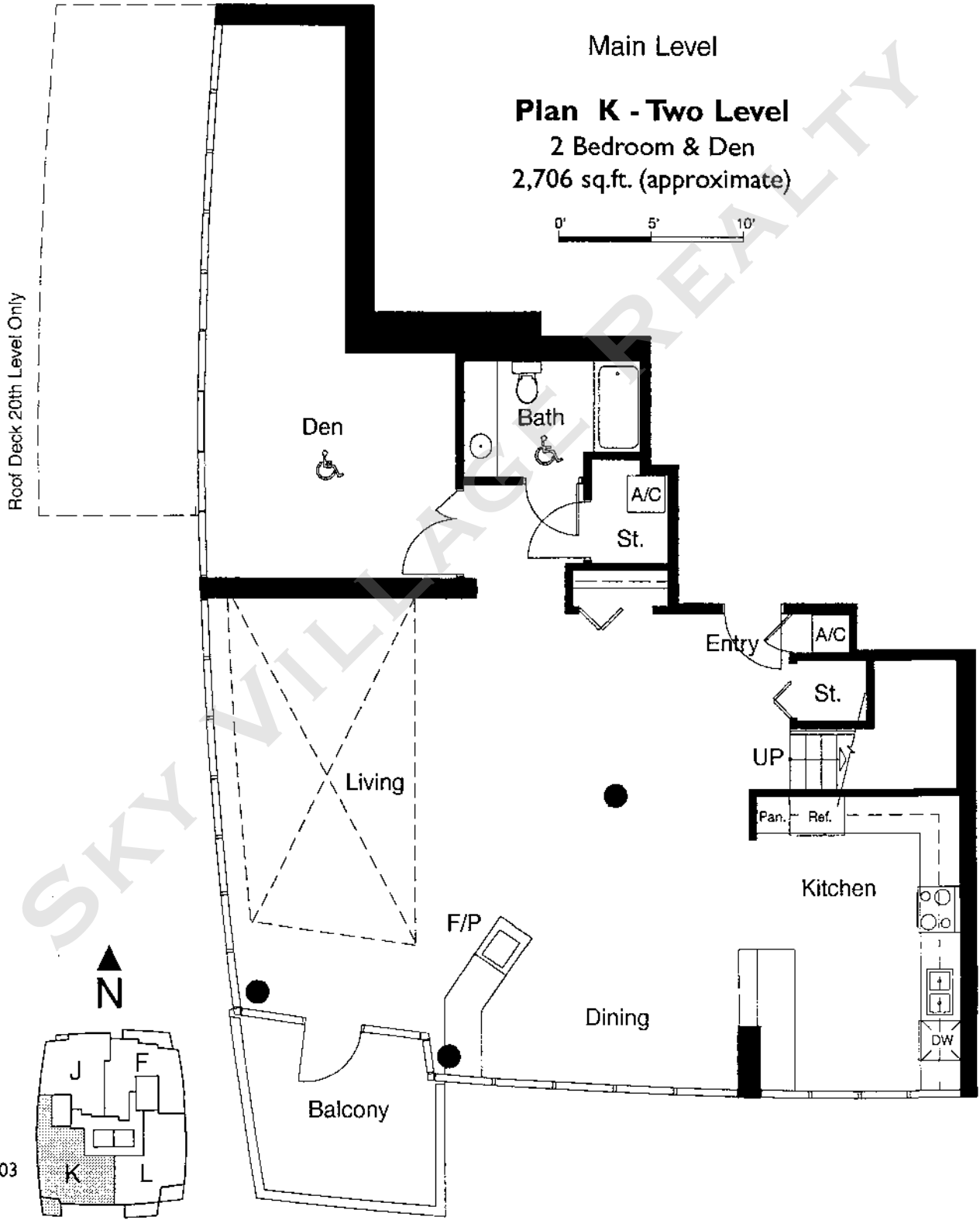
Plan J - Two Level
3 Bedroom
2,267 sq.ft. (approximate)

#2004 to #2204



HORIZONS

MARINA DISTRICT

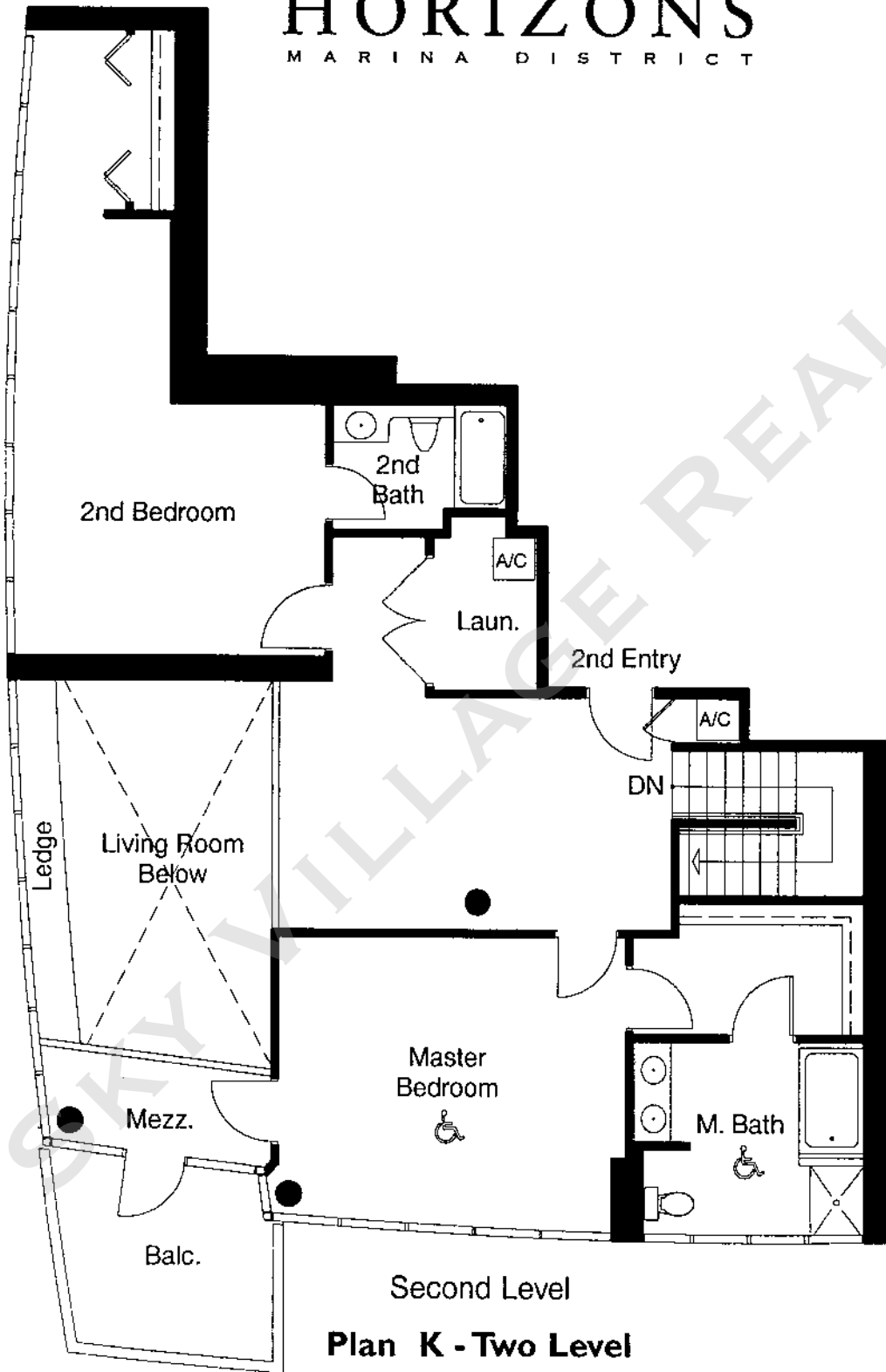


#2003 and #2203

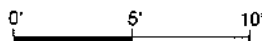
The builder reserves the right to change floor plans, elevations, specifications and prices without notice. Square footages as noted are approximations of each individual unit. The Purchaser is responsible for verification of the unit layout & square footage. All renderings, floor plans and maps are artist's conceptions and are not intended to be a representation of buildable details or construction. Please refer to the actual drawings for details.



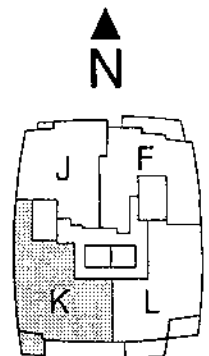
HORIZONS
MARINA DISTRICT



Plan K - Two Level
2 Bedroom & Den
2,706 sq.ft. (approximate)

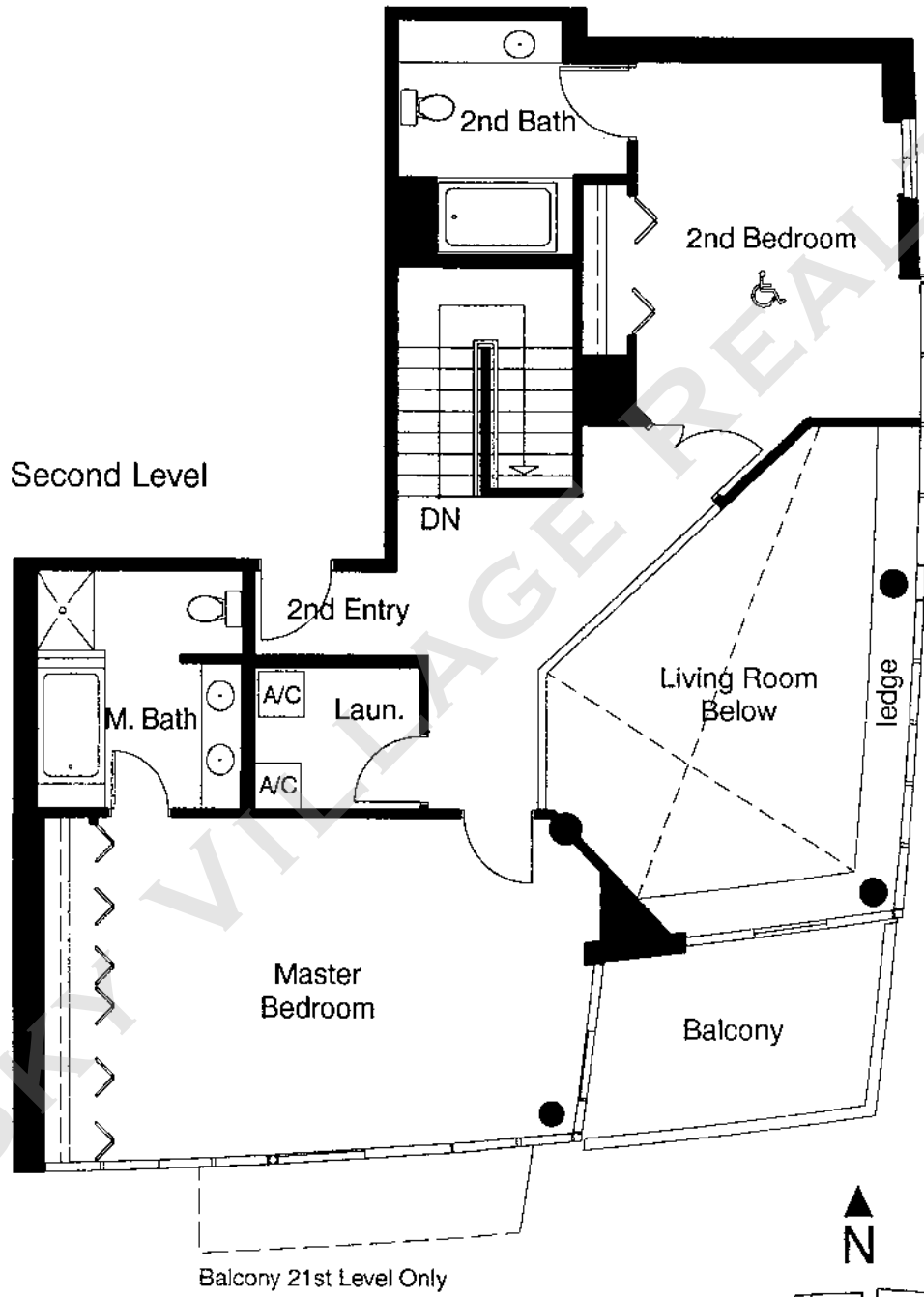


#2003 and #2203

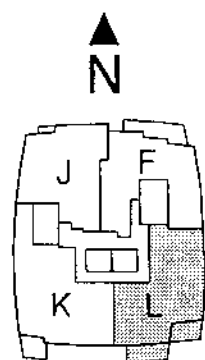
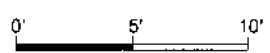




HORIZONS
MARINA DISTRICT



Plan L - Two Level
3 Bedroom
2,479 sq.ft. (approximate)

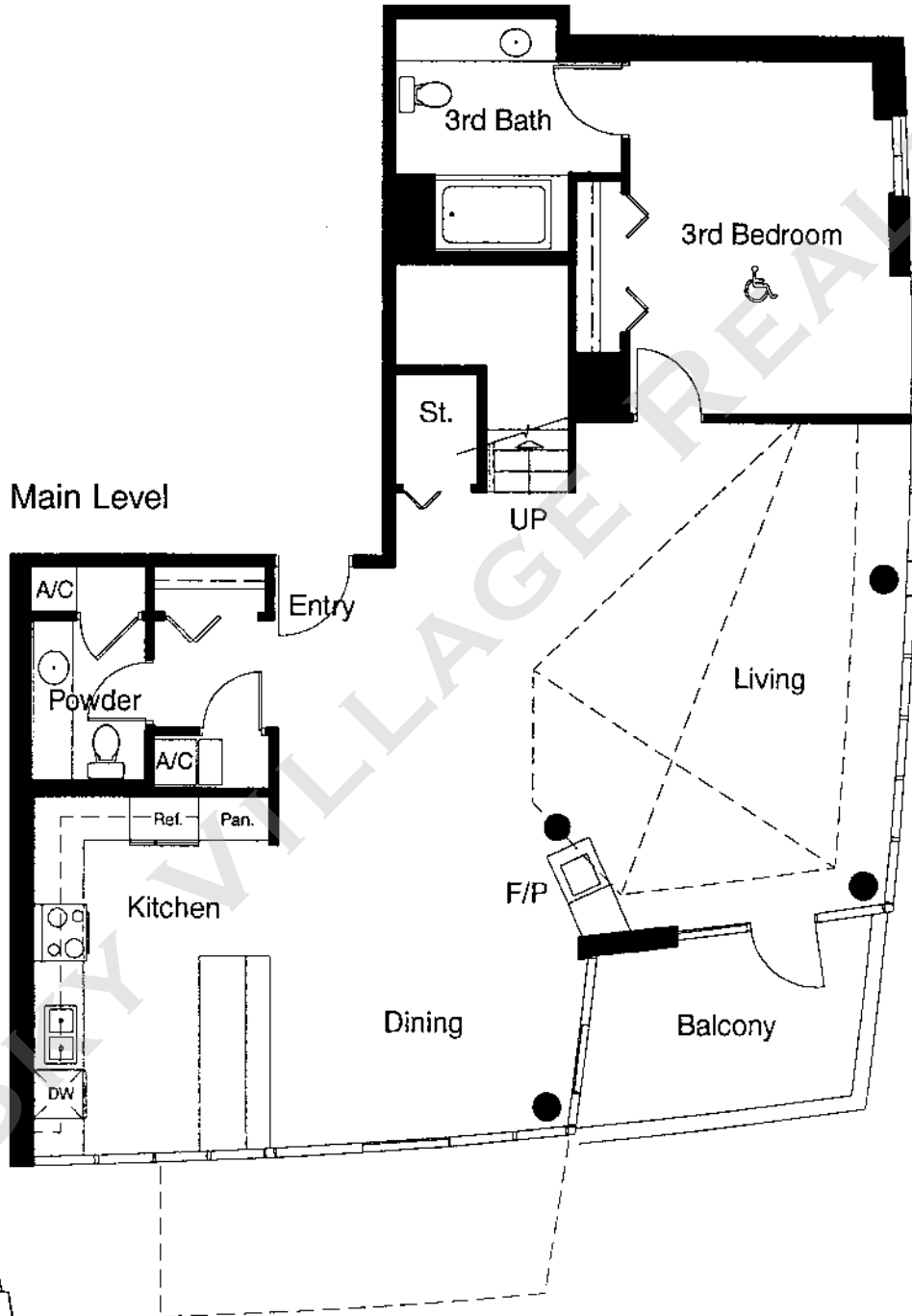


#2002 and #2202

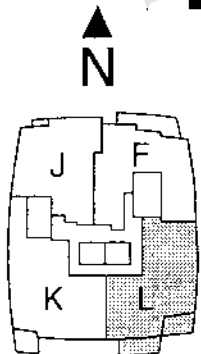
The builder reserves the right to change floor plans, elevations, specifications and prices without notice. Square footages as noted are approximations of each individual unit. The Purchaser is responsible for verification of the unit layout & square footage. All renderings, floor plans and maps are artist's conceptions and are not intended to be an actual depiction of buildings, drawings or landscaping. Floor plans may differ from actual construction. For more details, please contact the sales office.



HORIZONS
MARINA DISTRICT

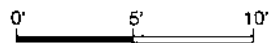


Roof Deck 20th Level Only



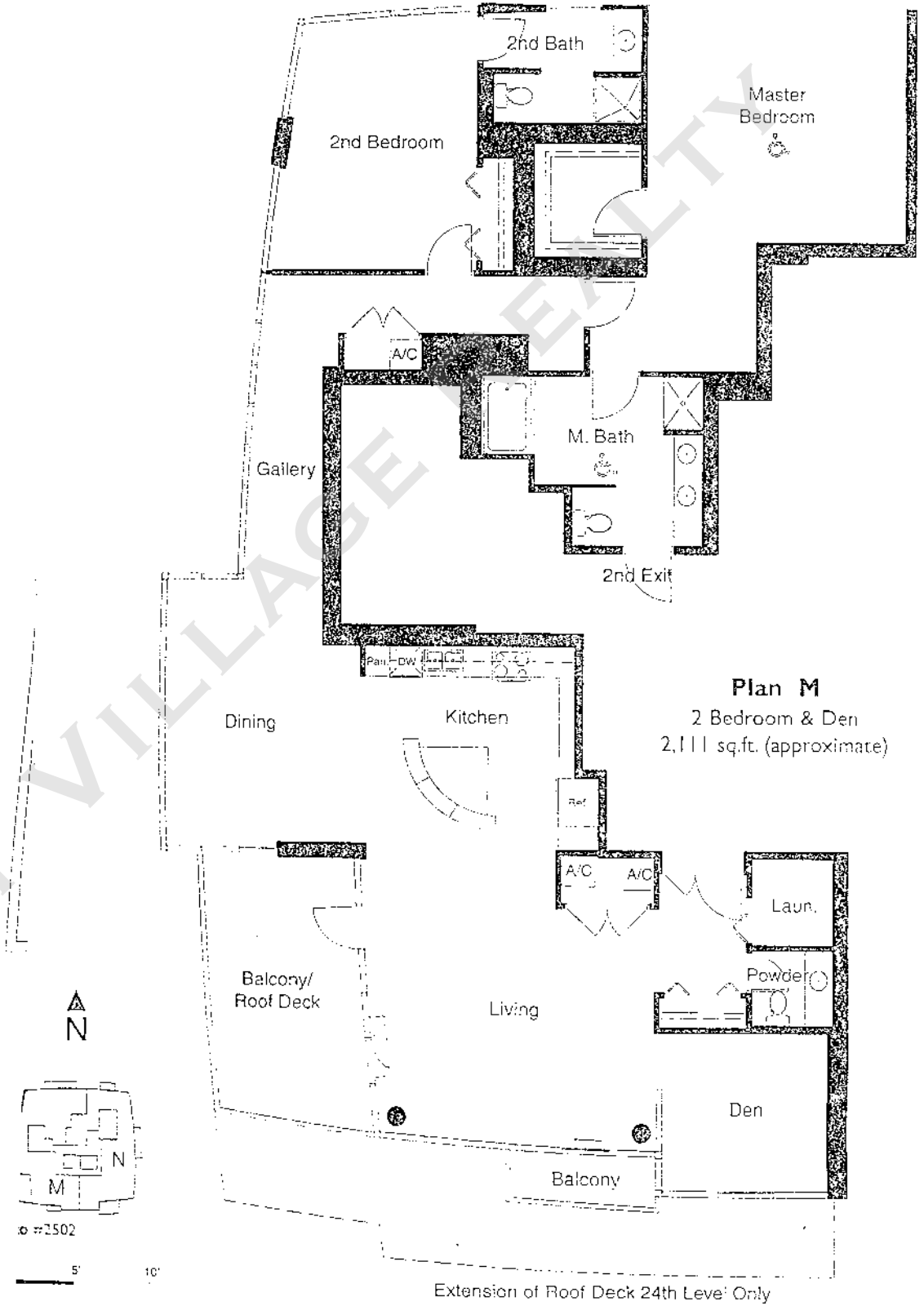
#2002 and #2202

Plan L - Two Level
3 Bedroom
2,479 sq.ft. (approximate)



The builder reserves the right to change floor plans, elevations, specifications and prices without notice. Square footages as noted are approximations of each individual unit. The Purchaser is responsible for verification of the unit layout & square footage. All renderings, floor plans and maps are artist's conceptions and are not intended to be

HORIZONS
MARINA DISTRICT



Plan M
2 Bedroom & Den
2,111 sq.ft. (approximate)

Extension of Roof Deck 24th Level Only

o #2502

Builder reserves the right to change floor plans, elevations, specifications and prices without notice. Square footages as noted are approximations of each individual unit. Buyer references to measurements be verification of the unit by a licensed surveyor. All measurements, floor plans and prices are not to be construed as an offer or contract. For more information, please contact the sales office at 1-800-368-3683.



HORIZONS

MARINA DISTRICT

